

## Digital Cabinets Roll-in Refrigerator 930 lt - 1 door - remote CO2 R774

ITEM # \_\_\_\_\_

MODEL # \_\_\_\_\_

NAME # \_\_\_\_\_

SIS # \_\_\_\_\_

AIA # \_\_\_\_\_

**725160 (RI093RE1FRC)**

1-door Roll-in Refrigerator  
930lt, 0/+10°C, AISI 304,  
remote, CO2 R774 with  
valve

### Short Form Specification

#### Item No. \_\_\_\_\_

External and internal in AISI 304 stainless steel. Insulation thickness mm60. Right hinged full door with lock. Bottom door gasket adjustable. Remote refrigeration unit; ventilated operating mode. Digital control panel; temperature display; humidity control; hidden evaporator; automatic defrost. Smart Electronic Control: HACCP incorporated; temperature and humidity of food stored can be set by pushing a button. Operating temperature 0/+10° C. For ambient temperatures up to 43°C.. Specific for CO2 gas, valve is included.

### Main Features

- Ventilated cooling for optimal temperature distribution.
- Lift-up control panel to better access main components.
- Digital control panel with temperature display.
- Connectivity ready for real time access to connected appliances from remote and data monitoring (requires optional accessory).
- Large digital white-digit display with humidity selection button (3 preset level), internal temperature display and setting, manual activation of defrost cycle and turbo frost cycle (to rapidly cool warm loads).
- The operating temperature can be adjusted from 0 to +10 °C to suit both meat and dairy storage requirements.
- Automatic defrost and automatic evaporation of defrost water.
- One full door.
- Complies with main international certification bodies and is CE marked.
- Inner side protectors to protect the internal walls.
- Adjustable bottom door gasket.
- Simple cooling unit easily accessible from the rear of the appliance.
- Tropicalized unit.

APPROVAL: \_\_\_\_\_

## Construction

- Evaporator and fan are placed outside the cell to provide the maximum storage capacity.
- Lockable door.
- Evaporator cover is easily removable for service.
- Developed and produced in ISO 9001 and ISO 14001 certified factory.
- Remote compressor to suit operating conditions.
- Electrical connection: 220-240V-single phase 50HZ or 220-240V-single phase 60HZ.
- Interior cell and external panel are constructed in 304 AISI stainless steel.
- External panels are in AISI 304 stainless steel for higher level of hygiene.

## Sustainability

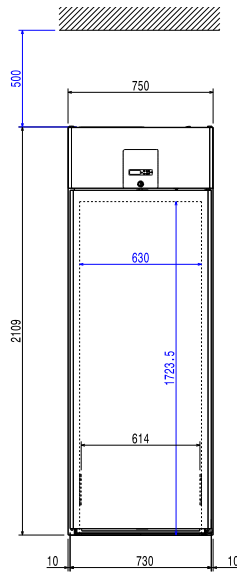


- Finished in top quality materials to ensure durability.
- CFC and HCFC-free insulation.
- Cabinet fitted with up to 60 mm thickness of Cyclopentane insulation for best insulating performance (thermal conductivity: 0,020 W/m\*K). CFC and HCFC-free insulation.
- CO<sub>2</sub> (R744) is the refrigerant choice that's safe for the environment and delivers outstanding performance.  
Eco-Friendly: Zero Ozone Depletion Potential and an ultra-low Global Warming Potential (GWP = 1).  
Safe to Use: Non-toxic and non-flammable for peace of mind.  
Sustainable: A natural refrigerant that supports a greener, cleaner planet.

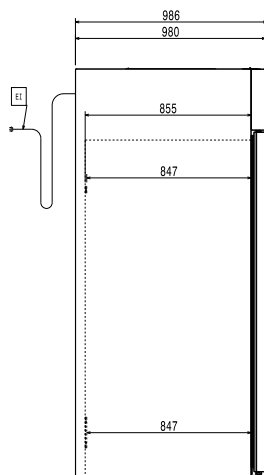
## Optional Accessories

- |   |            |                          |
|---|------------|--------------------------|
| • Insulated floor-ramp for 930lt Roll-in Refrigerator   | PNC 881280 | <input type="checkbox"/> |
| • Trolley with tray rack, 20 GN 1/1, 63mm pitch   | PNC 922753 | <input type="checkbox"/> |
| • Trolley with tray rack, 16 GN 1/1, 80mm pitch   | PNC 922754 | <input type="checkbox"/> |
| • Bakery/pastry trolley with rack holding 600x400mm grids for 20 GN 1/1 oven and blast chiller freezer, 80mm pitch (16 runners) | PNC 922761 | <input type="checkbox"/> |

Front

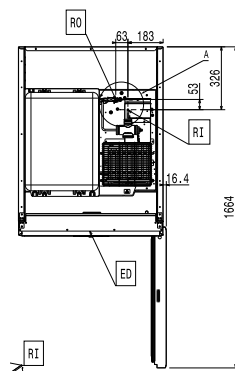


Side



EI = Electrical inlet (power)  
 RI = Refrigerant Inlet  
 RO = Refrigerant Outlet

Top



### Electric

Supply voltage: 220-240 V/1 ph/50/60 Hz

### Key Information:

#### Door hinges:

External dimensions, Width: 750 mm  
 External dimensions, Depth: 986 mm  
 External dimensions, Height: 2109 mm  
 Number and type of doors: 1 Full  
 External side panels: 304 AISI  
 External top panels: Galvanized Steel  
 External door material: 304 AISI  
 Internal panels material: 304 AISI

### Refrigeration Data

Control type: Electronic  
 Operating temperature max.: 10 °C  
 Refrigeration type: R744  
 Suggested refrigeration power: 605 W  
 Condition at evaporation temperature: -10 °C  
 Condition at condensation temperature: 55 °C  
 Condition at ambient temperature: 32 °C  
 Connection pipes (remote) - outlet: 8 mm  
 Connection pipes (remote) - inlet: 8 mm

### ISO Certificates

ISO Standards: ISO 9001; ISO 14001; ISO 45001; ISO 50001